

PUREOPTICS™ LED

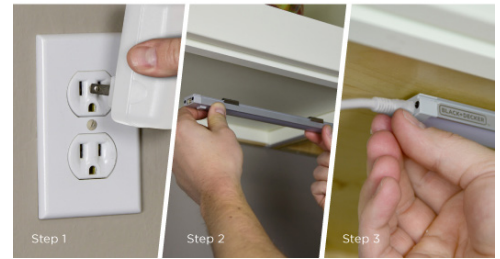
Tool-Free LED Under Cabinet Lighting



ELECTRICAL & LIGHTING



TOOL-FREE INSTALLATION
Easy, DIY installation—no tools required



PUREOPTICS™ LED

Tool-Free LED Under Cabinet Lighting

Versatile design for quick applications in kitchens, bathrooms, laundry rooms, closets and more!



All-inclusive kit for immediate use

LED UNDER CABINET LIGHT BARS

- Quick and reliable installation process—no tools required
- Ultra-thin & linkable design up to five 228mm light bars
- Hands-free motion sensor for power control
- 10 brightness levels
- Optional three-hour auto shutoff
- Invigorating cool color temperature at 4,000 Kelvin
- Versatile design for quick applications in kitchens, bathrooms, laundry rooms, closets and more
- Illuminates a soft, flicker-free light zone up to 914.4mm
- Cost-efficient, PureOptics™ LEDs last up to 50,000 hours and use 85% less energy than incandescent lights
- Standard Kit coverage of 2.5M

RLEDUC3CKIT LED LIGHTING KIT 3 Bar Cool White

CONSIST OF:

- 3 x 228mm LED Bars
- Motion sensor unit
- S.A. Plug fitting
- 2 x 750mm connector cables
- 3 x 100mm connector cables
- 1 x 300mm connector cable
- 10 x Bar Mounting clips
- 10 x Cable Mounting clips



Optional Extras



RLEDUCBAR
LED BAR



RLEDUPS
PLUG & SENSOR



RLEDCLIP
BAR MOUNTING CLIP



RLEDWCLIP
CABLE MOUNTING CLIP



RLEDJMP108
2.7M CONNECTOR CABLE

Optional Extras Below

RLEDUCBAR
LED BAR
228mm Bar
Cool White
Sold separately

RLEDCLIP
LED KIT SPARE BAR
MOUNTING CLIP
SILVER
Sold separately

RLEDWCLIP
LED KIT SPARE
CABLE CLIP
SILVER
Sold separately

RLEDJMP108
LED KIT JUMPER CABLE
2.7m
Sold separately

RLEDUPS
LED KIT SPARE
PLUG & SENSOR
Sold separately

POWERDOCK



RPD6050C
POWERDOCK
Standard Champagne

POWERDOCKS CONSIST OF

- 3 x SA 3pin sockets
- 3 x Euro 2pin sockets
- Waterproof seal
- Built-in overload trip switch
- SABS approved
- Surface hole dimension: 80mm
- Height = 425mm Width = 104mm
- Extracted: protrudes 205mm from Counter
- Retracted: retracts 450mm Below Counter
- Operating voltage: 220v - 250 VAC 50 Hz
- Current: 15AMP max



RPD6050S
POWERDOCK
Standard Silver



RPD6050
SOHO POWERDOCK

- **CONSISTING OF**
- 2 x SA 3pin sockets
- 2 x Euro 2pin sockets
- 2 x Data ports
- 1 x USB ports
- 1 x USB cable
- Waterproof seal
- Built-in overload trip switch
- SABS approved
- Surface hole dimension: 80mm
- Height = 425mm Width = 104mm
- Extracted: protrudes 205mm from counter
- Retracted: retracts 450mm below counter
- Operating voltage: 220v - 250 VAC 50 Hz
- Current: 15AMP max



RPD6050PD
MK2 POWERDOCK
Gas-strut operated

- **CONSISTING OF**
- 2 x SA 3pin sockets
- 1 x 2pin socket
- Waterproof seal
- Built-in overload trip switch
- SABS approved
- Surface hole dimension: 95mm
- Height = 425mm Width = 104mm
- Extracted: protrudes 205mm from counter
- Retracted: retracts 450mm below counter
- Operating voltage: 220v - 240 VAC 50 Hz
- Current: 15AMP max



RPD6050PDSOHO
SOHO PUSH DOWN POWER DOCK
MK2 WITH VOICE / DATA PORTS
Gas-strut operated

- **CONSISTING OF**
- 1 x SA 3 pin (Normal)
- 1 x SA 2 pin
- 0.3m input M3PPG
- Peripherals: Cat6, USB, HDMI, or VGA or Audio. HDMI and Voice
- or VGA cables pre-fitted
- Cat6 socket fitted to base
- 2m SA Input Cable (SAIP)
- Built-in thermal overload switch rated at 15A
- User-friendly with shuttered power outlets
- Robust aluminium construction
- Blue LED power indicators in top cap blue ring
- Easy installation
- Flush mounting
- Push to release



RPD6050PDMK3
POWER DOCK BLACK & SILVER
MK3

- **CONSISTING OF**
- 2 x SA 3 pin (Normal)
- 2 x SA New 3 pin (SA/Brazi)
- Built-in thermal overload switch rated at 15A
- 2.0 Smart Dual Charging Port (SDCP)
- 2m SA Input Cable (SAIP)
- Dual USB Smart DCP built into the top cap with spring loaded protection cover
- Swiveling Cable Input with built in 3ppG male
- Designed so that most plug tops can remain connected to the unit when in the closed/down position
- Chrome handle doubles as cable exit for attached plug tops.
- Illuminated locking clip doubles as a "power on" indicator



**R590FROF1
DRAWER LED LIGHT**

(Excl Batteries)

- Easy To Install
- Works with batteries
- Activated by motion sensor

**RTS18135B
LED CABINET LIGHT
WITH MOTION SENSOR**

(W/O Battery)

275mm

- Easy To Install
- Works with batteries
- Activated by motion sensor
- Deactivated after 20 seconds without motion
- For applications in bedrooms, staircases and kitchens



**RHM77A
HINGE LIGHT LED**
(Excl Batteries)

- Easy to install
- Works with a battery
- Activated & deactivated when opening and closing the door