

HINGES **FGV**

HINGES **CABX**



CONCEALED **HINGES**

HINGES - FGV

A premium worldwide brand associated with Roco Fittings for the past 25 years. FGV is built on quality & reliability.



Integra

SlowMotion Inside

CLIP ON HINGES

CLICK HINGE INTEGRA WITHOUT DAMPER - FGV

		FIXING TYPE	TECHNICAL DRAWING	OPENING ANGLE
R515SH50500C5000 0mm 110 Deg - Screw Fixing				
R515SH60500S5000 0mm 110 Deg - Dowel Fixing				
R515SH50508C5000 8mm 110 Deg - Screw Fixing				
R515SH60508S5000 8mm 110 Deg - Dowel Fixing				
R515SH50515C5000 15mm 110 Deg - Screw Fixing				
R515SH60515S5000 15mm 110 Deg - Dowel Fixing				
R515H850545C5000 45 Deg - Screw Fixing				
R51AH860545S5000 45 Deg - Dowel Fixing				
R515WH50500C5000 0mm 175 Deg - Screw Fixing				
R515WH60500S5000 0mm 175 Deg - Dowel Fixing				
R515H850590C5000 90 Deg Blind Cnr - Screw Fixing				
R51AH860530S5000 30 Deg - Screw Fixing				



CLICK HINGE INTEGRA WITH DAMPER - FGV

		FIXING TYPE	TECHNICAL DRAWING	OPENING ANGLE
R51ASH50500C5000 0mm 110 Deg - Screw Fixing				
R51ASH60500S5000 0mm 110 Deg - Dowel Fixing				
R51ASH50508C5000 8mm 110 Deg - Screw Fixing				
R51ASH60508S5000 8mm 110 Deg - Dowel Fixing				
R51ASH50515C5000 15mm 110 Deg - Screw Fixing				
R51ASH60515S5000 15mm 110 Deg - Dowel Fixing				
R51AH850545C5000 45 Deg - Screw Fixing				
R51AWH50500C5000 0mm 175 Deg - Screw Fixing				
R51AWH60500S5000 0mm 175 Deg - Dowel Fixing				
R51AH850590C5000 90 Deg Blind Cnr				

INTEGRA MOUNTING PLATES



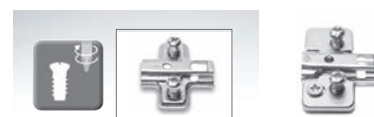
INTEGRA CLICK PLATE - SCREW FIXING

R525A01M50200000 2mm Screw Fixing

R525A01M50400000 4mm Screw Fixing

R525A33M500000 0mm V Shaped 4 Holes Screw Fixing (Frame Hinge)

R52RA44L50205000 2mm With Cam Adjustment & Stp Screws



INTEGRA CLICK PLATE - EUROSREW

R52RA47L502A5000 2mm With Cam Adjustment & 14mm Euroscrews



INTEGRA CLICK PLATE - X-PANDO DOWEL

R525AN5M50200000 2mm With X-Pando Dowels 5mm X 9.8mm

SLIDE-ON HINGES

110° Straight

SCREW FIXING
R51MS150500C00

DOWEL FIXING
R51MS160500S00

$H = (14 + A + K) - S$

24° to 30° Corner

SCREW FIXING
R51MS850530C00

110° 8mm Crank

SCREW FIXING
R51MS150508C00

DOWEL FIXING
R51MS160508S00

$H = (6 + A + K) - S$

Corner Cupboard

SCREW FIXING
R51MS830535C00

110° 15mm Crank

SCREW FIXING
R51MS150515C00

$H = A + K - 1$

175° Straight

SCREW FIXING
R51MW150500C00

DOWEL FIXING
R51MW160500S00

$H = (14 + A + K) - S$

**Slide On Plate
4 Hole**

HEIGHT	CODE
H = 2	R525231M502100
H = 4	R525231M504100

175° 8mm Crank

SCREW FIXING
R51MW150508C00

$H = (6 + A + K) - S$

**Steel Cruciform
Base Plate
without screws**

HEIGHT	CODE
H = 0	R520201M500100
H = 2	R520201M502100
H = 4	R520201M504100

Blind Corner

SCREW FIXING
R51MS850590C00

**Steel Cruciform
Base Plate
with 5mm
X-Pando dowels**

9.2mm Dowel	
HEIGHT	CODE
H = 2	R5252N5M502100
H = 4	R5202N5M504100

Negative 25°

SCREW FIXING
R51MK850525C00

45° Corner

SCREW FIXING
R51MS850545C00

DOWEL FIXING
R51MS860545S00

GLASS DOOR HINGES

90° Straight

GLASS DOOR HINGE
R51MG112300000

$H = (13 + A + K) - S$

26mm Cup

Round Face Plate for Glass Door Hinge

COLOUR	CODE
CHROME	R5101500501R00
BLACK	R5101500801R00
MATT CHROME	R510150001R00

90° 8mm Crank

GLASS DOOR HINGE
R51MG112308000

$H = (5 + A + K) - S$

26mm Cup

Steel Cruciform Base Plate without screws

HEIGHT	CODE
H = 0	R520201M500100
H = 2	R520201M502100
H = 4	R520201M504100

90° 15mm Crank

GLASS DOOR HINGE
R51MG112315000

$H = A + K - S$

26mm Cup

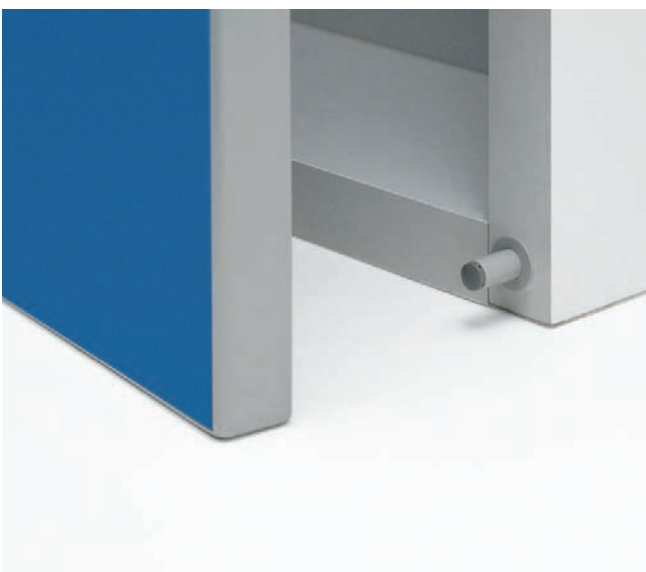
SHORT ARM HINGE / FRAME HINGE

0mm Crank

SCREW FIXING
R51MZ5M512055

$H = 3.0$

ANTI-SLAM DEVICE & BRACKET



RFG595300
FGV ANTI-SLAM PISTON

RFG590337
FGV ANTI-SLAM & PUSH TO OPEN
MOUNTING BRACKET



PUSH TO OPEN HINGES & MECHANISMS

R594200P610F00

PUSH TO OPEN DEVICE WITH MAGNET + ADHESIVE PLATE



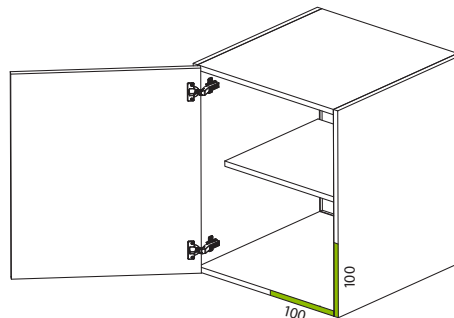
RFG590337

FGV ANTI-SLAM & PUSH TOP OPEN MOUNTING BRACKET

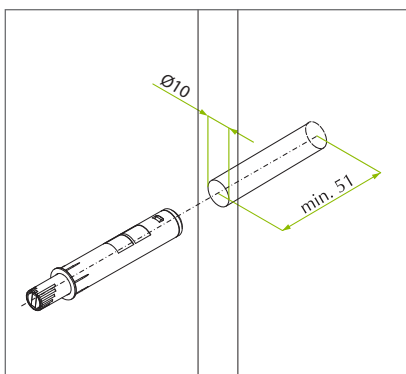


IDEAL ASSEMBLY:

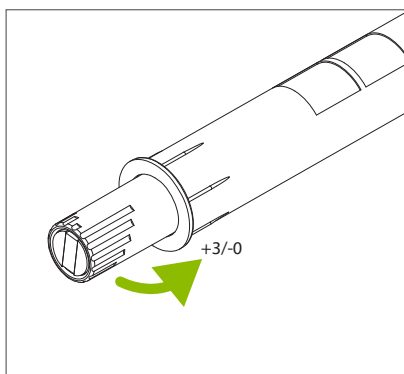
The One Touch device for door without handles has to be mounted in the corresponding area of the handle.



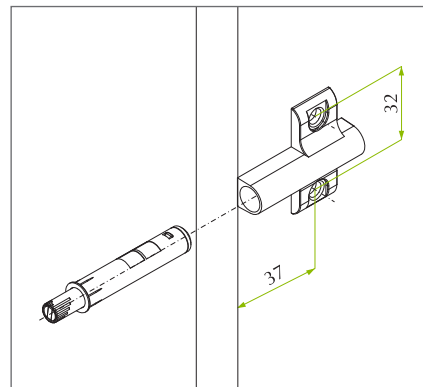
Installation without mounting bracket



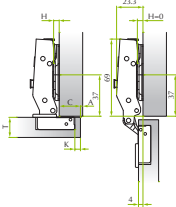
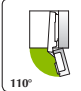
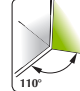


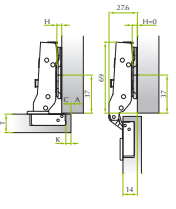




Adjustment

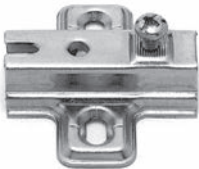


Installation with mounting bracket

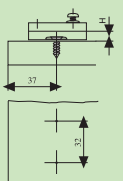


PUSH TO OPEN HINGES	FIXING TYPE	TECHNICAL DRAWING	OPENING ANGLE
R51MS15P50000000 0mm 110 Deg - Screw Fixing	 		 
R51MS15P50800000 8mm 110 Deg - Screw Fixing	 		 

Steel Cruciform Base Plate without screws



HEIGHT	CODE
H = 0	R520201M500100
H = 2	R520201M502100
H = 4	R520201M504100



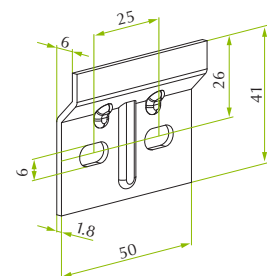
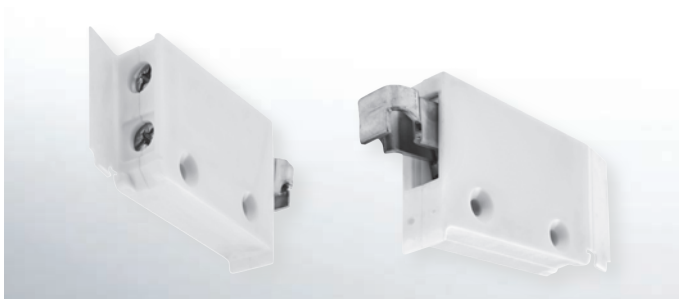


LEVA - WALL HANGING BRACKET



SYMMETRICAL WALL HANGING BRACKET

- Fixing with selftapping screws
- Symmetrical hook
- Front adjustment easy to access
- Adjustment screws to avoid accidental dismounting
- Flap for screws covering

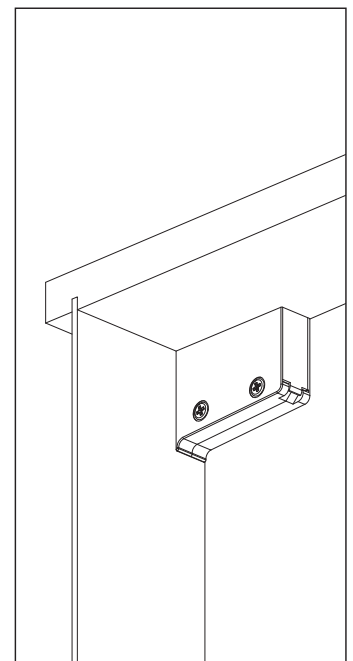
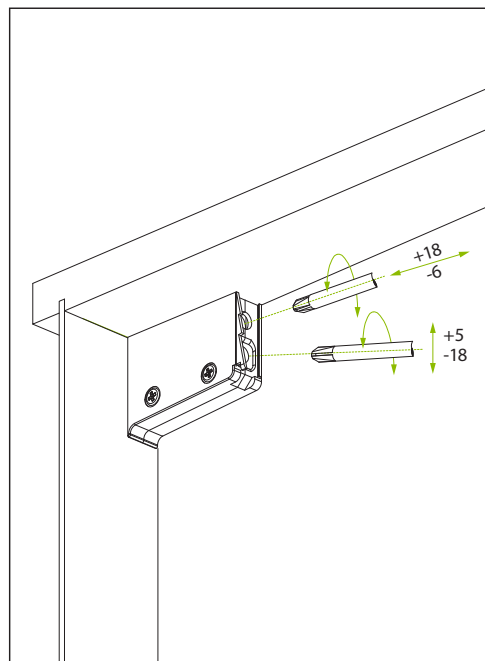
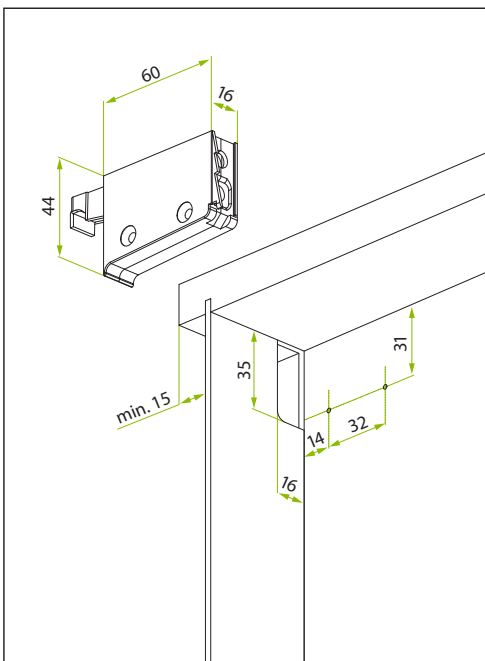


WALL HANGING BRACKET FOR LEVA - FGV

R535753A100000 LEVA WHITE

WALL HANGING PLATE

R22002707005CF 41X50mm



AEROBUS & AERO WING LIFT MECHANISMS



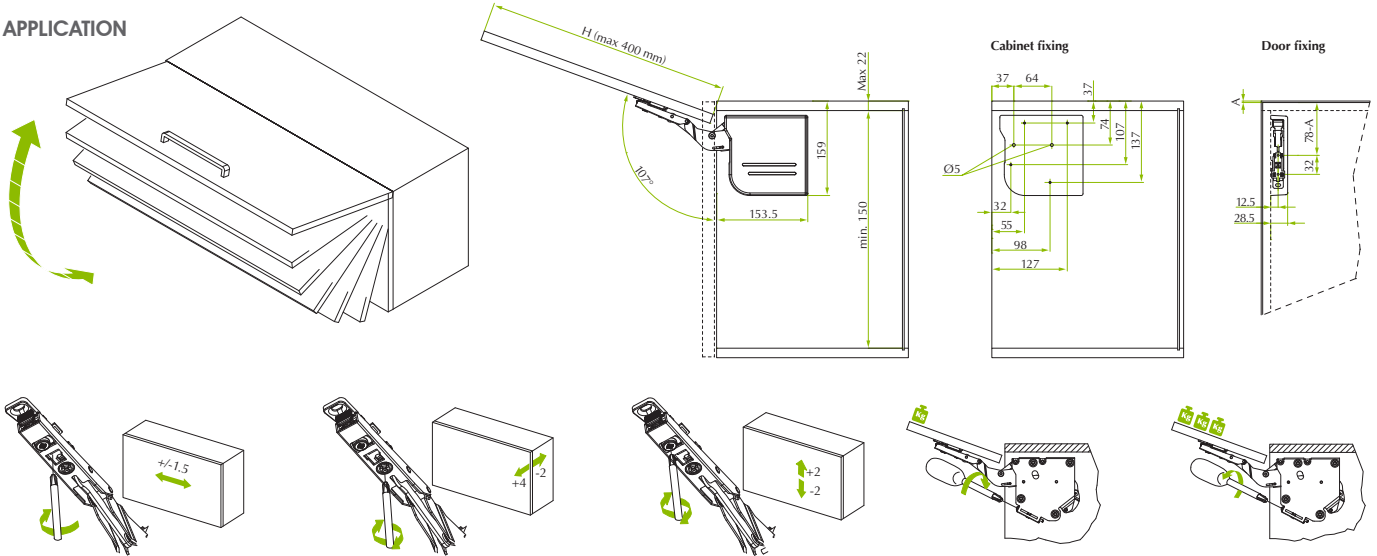
AEROBUS LIFT MECHANISM - FGV

R590VBSA9D400 D40 - 2.4-5.5KG DOOR

TECHNICAL SPECIFICATIONS:

- Upwards operation
- Easy and rapid assembly with click-on door fixing
- No hinges required
- No stabilization bar required
- Door and weight adjustments
- SlowMotion technology for controlled and silent closing

APPLICATION



R590VW0050000

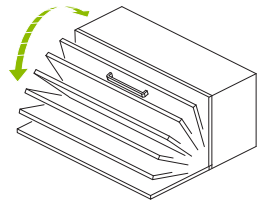
AERO WING LIFT STAY MECHANISM - FGV

37mm

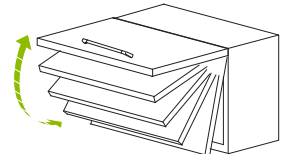
TECHNICAL SPECIFICATIONS:

- The three in one lifter solution:
 - self holding in all positions
 - self lifting and SlowMotion
 - flap with brake
- 32mm standard cabinet drilling
- Covers 75°, 90° and 105° angles
- Can be combined with slowmotion hinges

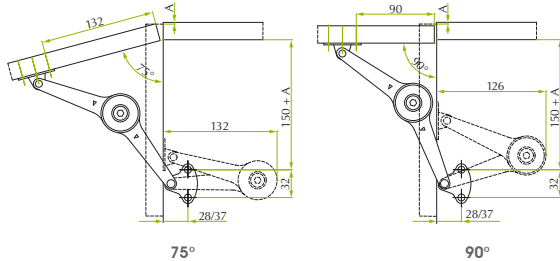
DOWN SOLUTION APPLICATION



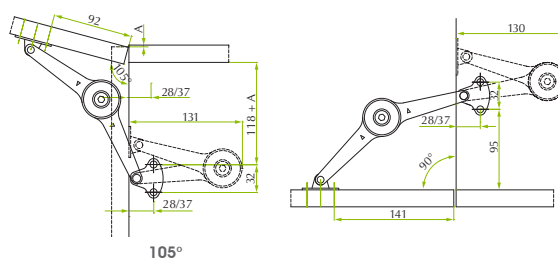
UP SOLUTION APPLICATION



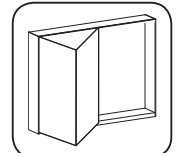
UP SOLUTION APPLICATION



DOWN SOLUTION APPLICATION

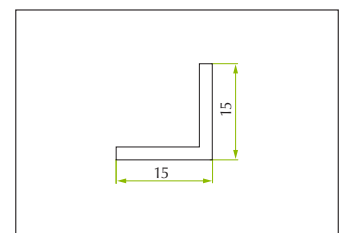
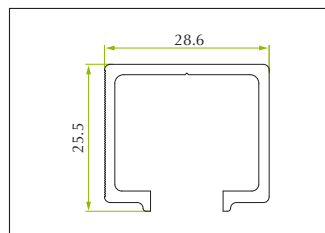


DOMINO W - FOLDING DOOR SYSTEM



TECHNICAL SPECIFICATIONS:

- Sliding system for folding hinged doors
- Max door width of 1000mm (500+500), max door thickness of 25mm
- Mechanism max load capacity of 50kg
- Door weight applied to the upper bar
- Application also without lower truck and lower bar

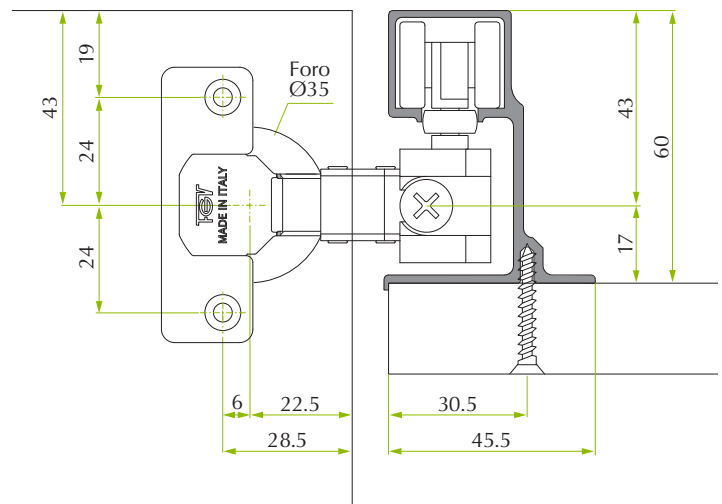


R590DWB0ASI2000U
DOMINO W UPPER RAIL - FGV
2m ALUMINIUM

R590DWB0AI02000L
DOMINO W LOWER RAIL - FGV
2m ALUMINIUM



R590DW0030000
DOMINO W FOLDING DOOR KIT - FGV
HINGES EXCLUDING RAILS


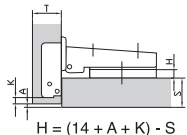

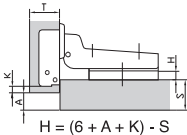

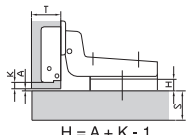

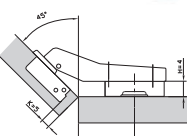

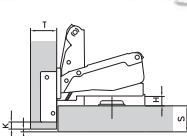



HINGES - CABX



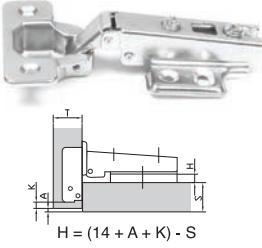

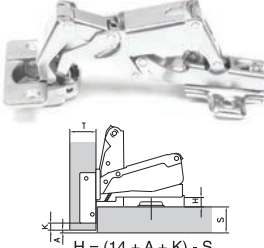

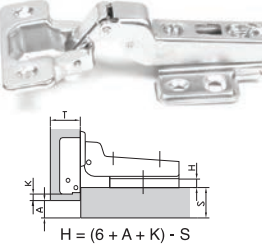

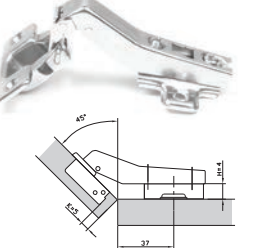

ECONOMICALLY SOURCED & PRICED RANGES OF HARDWARE FOR THE KITCHEN & FURNITURE INDUSTRIES

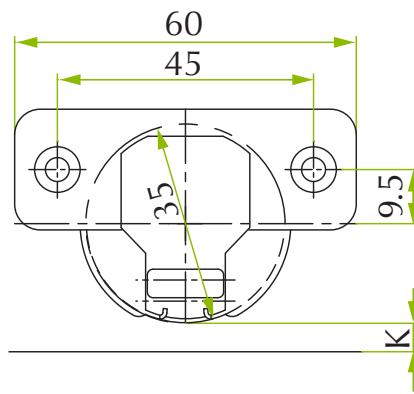
CABX SLIDE ON HINGE WITH MOUNTING PLATE

	SINGLE FORM	SINGLE WITH DOWELS	PREPACKED IN PAIRS
  <p>$H = (14 + A + K) - S$</p>	<p>AFTS145W34 110° STRAIGHT ALL METAL HINGE WITHOUT DOWELS Includes 4 Hole Mounting Plate Tested To 50 000 Cycles</p>	<p>AFTS145WD 110° STRAIGHT OMM ALL METAL HINGE WITH DOWELS Includes 4 Hole Mounting Plate</p>	<p>AFTS145W34P 110° STRAIGHT OMM ALL METAL HINGE WITHOUT DOWELS Includes 4 Hole Base Plate 2 per pack</p>
  <p>$H = (6 + A + K) - S$</p>	<p>AFTS245WI 110° 9MM OFFSET ALL METAL HINGE WITHOUT DOWELS Includes 4 Hole Mounting Plate Tested To 50 000 Cycles</p>	<p>AFTS245WD 110° 9MM OFFSET ALL METAL HINGE WITH DOWELS Includes 4 Hole Mounting Plate</p>	<p>AFTS245W34P 110° OFFSET 9MM ALL METAL HINGE WITHOUT DOWELS Includes 4 Hole Mounting Plate 2 per pack</p>
  <p>$H = A + K - 1$</p>	<p>AFTS345WI 110° INSET ALL METAL HINGE WITHOUT DOWELS INCLUDES MOUNTING PLATE Includes 4 Hole Mounting Plate Tested To 50 000 Cycles</p>	<p>AFTS345WD 110° INSET ALL METAL HINGE WITH DOWELS Includes 4 Hole Mounting Plate</p>	
 	<p>AFQS145WI 45° HINGE ALL METAL WITHOUT DOWELS Includes 4 hole Mounting Plate Tested To 50 000 Cycles</p>	<p>AFQS145WD 45° HINGE ALL METAL WITH DOWELS Includes 4 Hole Mounting Plate</p>	
  <p>$H = (14 + A + K) - S$</p>	<p>AFMS148WI 165° STRAIGHT CORNER HINGE ALL METAL WITHOUT DOWELS Includes 4 hole Mounting Plate Tested To 50 000 Cycles</p>		
	<p>AFTSPLATE SLIDE ON BASE PLATE 4 Hole (Optional Extra)</p>		

CABX SOFT CLOSING CLIP ON HINGE

WITH INTEGRATED SOFT CLOSING DAMPER AND MOUNTING PLATE

SINGLE FORM		SINGLE FORM	
 <p>$H = (14 + A + K) - S$</p>	<p>AFTS6190 110° STRAIGHT OMM ALL METAL HINGE WITH INTEGRATED SOFT CLOSING DAMPER Includes 4 Hole Mounting Plate Tested To 50 000 Cycles</p> 	 <p>$H = (14 + A + K) - S$</p>	<p>AFTS6195 165° CORNER HINGE ALL METAL WITH INTEGRATED SOFT CLOSING DAMPER Includes 4 hole Mounting Plate Tested To 50 000 Cycles</p> 
 <p>$H = (6 + A + K) - S$</p>	<p>AFTS6199 110° OFFSET ALL METAL HINGE WITH INTEGRATED SOFT CLOSING DAMPER 9MM Includes 4 Hole Mounting Plate Tested To 50 000 Cycles</p> 		<p>AFTST45 45° HINGE ALL METAL WITH INTEGRATED SOFT CLOSING DAMPER Includes 4 hole Mounting Plate Tested To 50 000 Cycles</p> 



HINGES - OTHER

ECONOMICALLY SOURCED & PRICED RANGE OF HINGES FOR THE KITCHEN & FURNITURE INDUSTRIES

SELF CLOSING HINGES

5 KNUCKLE PER PAIR

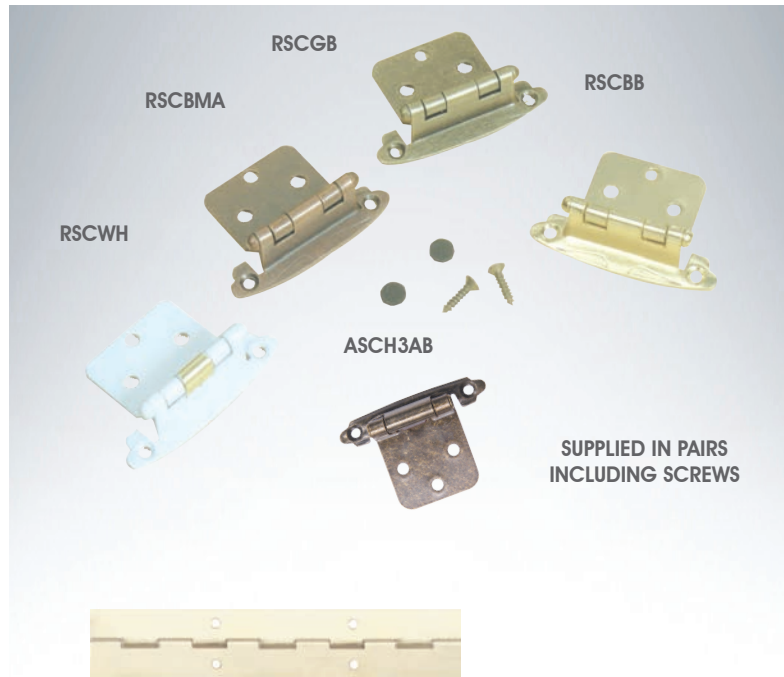
- RSCBB Bright Brass
- RSCBMA Antique Copper
- RSCGB Georgian Brass
- RSCCP Chrome
- RSCWH White

3 KNUCKLE PER PAIR

- ASCH3AB Antique Brass
- ASCH3NP Nickel Plated

PIANO HINGE

- APHEB32COILS 32mm Electro Brass
30m Coils



FLUSH HINGES

- AFH50EB 50mm Electro Brass
- AFH50NP 50mm Nickel Plated
- AFH50YP 50mm Yellow Passivated
- AFH64EB 64mm Electro Brass
- AFH64NP 64mm Nickel Plated

BUTT HINGE

- ABH50BR 50mm Brass
- ABH64BR 64mm Brass

